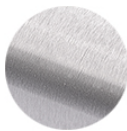


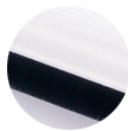


**KEGWORKS  
EXCLUSIVE**

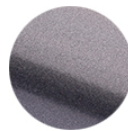
## AVAILABLE FINISHES



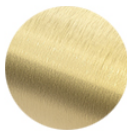
BRUSHED  
STAINLESS



POLISHED  
STAINLESS



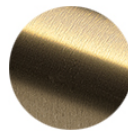
GUNMETAL  
GREY



BRUSHED  
BRASS



POLISHED  
BRASS



ANTIQU  
BRASS



SUNSET  
COPPER

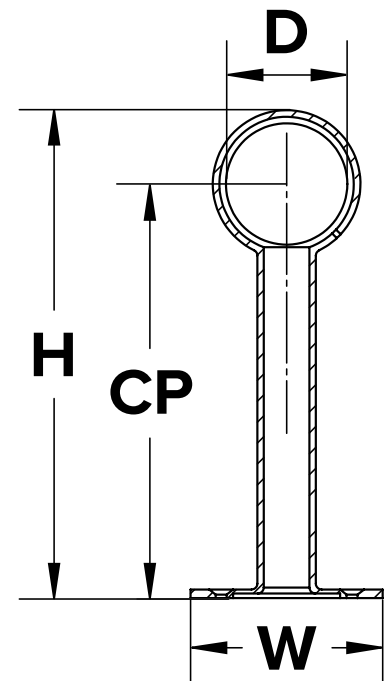


OIL RUBBED  
BRONZE



MATTE  
BLACK

**CUSTOM COLORS ARE AVAILABLE BY REQUEST**



## DIMENSIONS

(W) WIDTH	3.25"
(H) HEIGHT	8.00"
(D) DIAMETER	2.01"
(CP) CENTER POINT	7.00"

## INCLUDED HARDWARE

- 4 x #10 1-1/2" Mounting Screws
- 1 x #8 3/4" Self-Drilling Set Screw

## INSTALLATION

1. Measure & mark holes for mounting screws.
2. Attach brackets to the floor with the appropriate mounting screws.
3. Secure tubing to bracket by fastening set screws through hole in the bottom of bracket.

Care and maintenance of bar foot rail varies by finish. Given the nature of the product, typical wear and tear may be noticed with your bar rail over time, such as scuffs, scratches, and dirt. Visit [kegworks.com/bar-rail-care](http://kegworks.com/bar-rail-care) to read our guide on how to properly prep, clean & maintain all bar rail finishes.